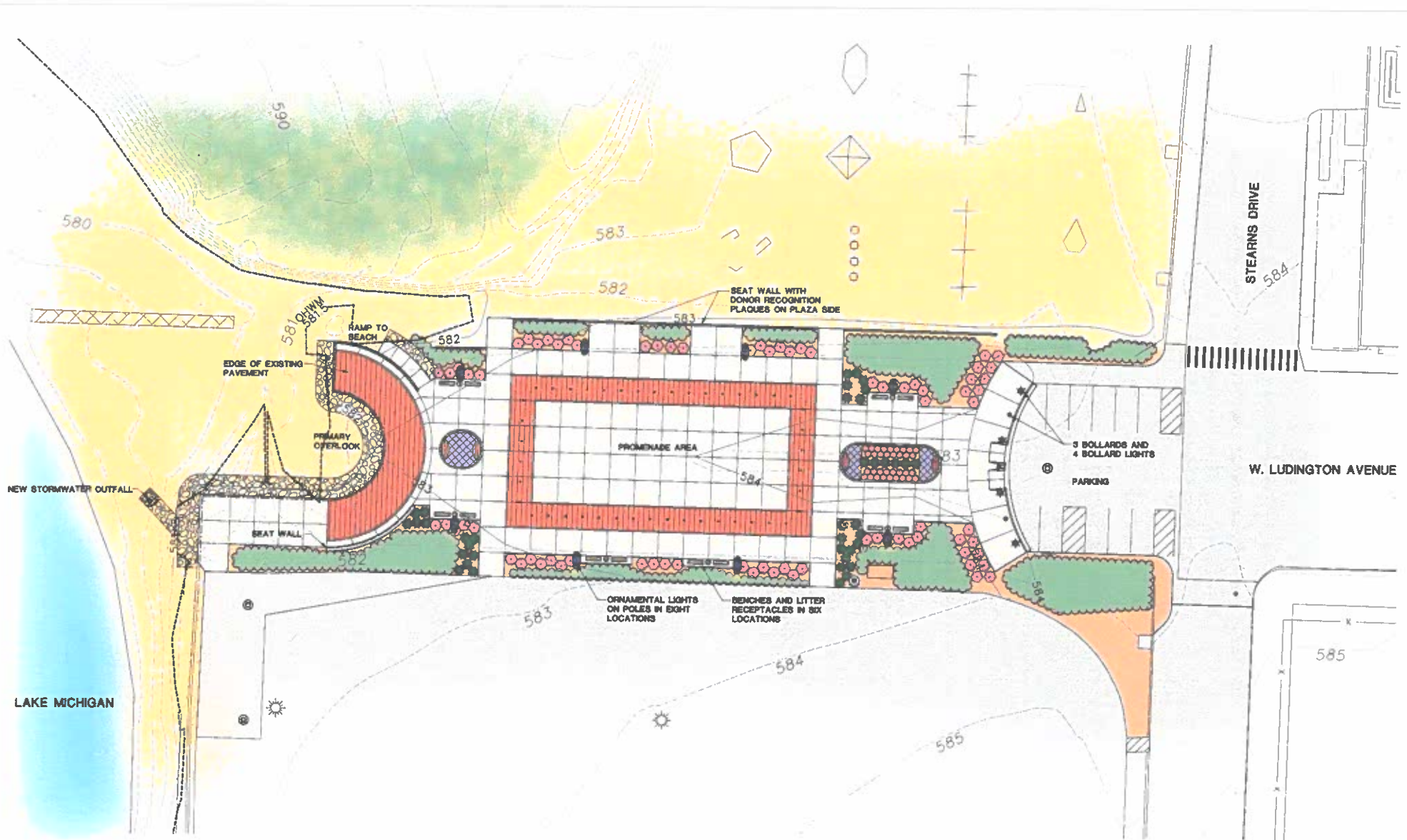


# WEST END - LUDINGTON AVE





# W. LUDINGTON AVENUE AND STEARNS PARK IMPROVEMENTS - PHASE 1



**SITE PLAN**  
 0 10' 20'  
 1"=10'  
 FEBRUARY 19, 2016

**progressive**

1811 4 Mile Rd N.E., Grand Rapids, MI 49525  
 616 361 2664 OFFICE 616 361 3493 FAX  
 www.progressiveinc.com